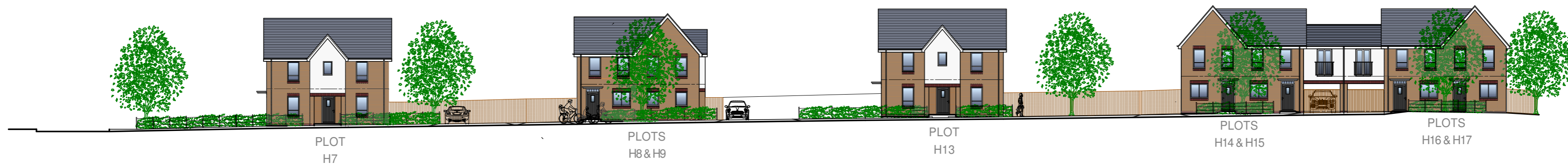
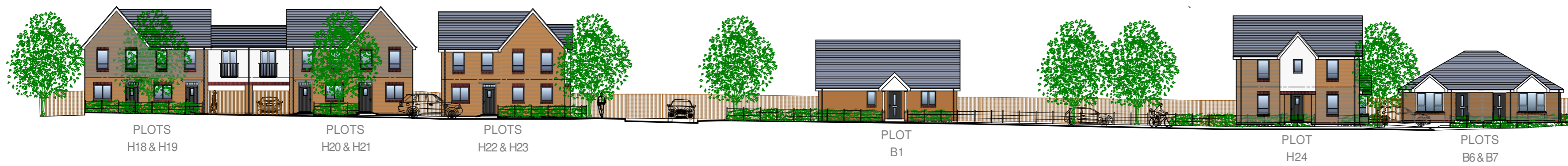




NORTH STREETSCENE

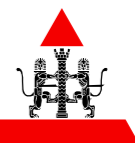


WEST STREETSCENE



EAST STREETSCENE

A EAST & NORTH STREETSCENE AMENDED TO PLAN CHANGES 12/03/21
 REVISIONS DATE


S. P. Faizey
 Chartered Architects
 1 Station Court
 Girtton Road
 Cannock
 Staffordshire
 WS11 0EJ
 t: 01543 466447
 e: arch@spfaizey.co.uk
 w: www.spfaizey.co.uk

SARH			
RESIDENTIAL DEVELOPMENT			
ROWLEY PARK, STAFFORD			
STREETSCENES			
scale@A2	date	drawn	drawing
1:250	AUG 20	MCB	15037/29A



Scale 1:250

Copyright of this drawing remains with S. P. Faizey Chartered Architects.
 The drawing may be scaled if viewed or printed off at the scale and paper size noted with no adjustments.